



# Windows 10 – prvi dve leti

Slavko Kukrika, MVP in prijazen fant

TEHNOLOGIJA



# Agenda

- ➔ Windows 10 is Windows as a Service
- ➔ Editions and features
- ➔ New and improved in Creator Update
- ➔ Mobile devices are on the rise
- ➔ Traditional and modern deployment

# Strojna oprema se razvija

## CPU v mnogo oblikah

Ultra-mobilni  
Minimalna poraba  
Kompaktni



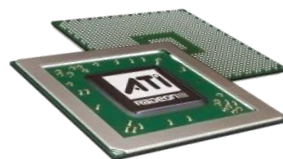
## 64-bitni procesorji

Nova stopnja zmogljivosti



## Grafični procesorji

(Moorov zakon)<sup>2</sup> in naprej



## Omrežja

Wireless vsepovsod  
Raznovrstni odjemalci  
Hitrejša lokalna omrežja



## Procesorji z več jedri

zmogljivejši in učinkovitejši

## Pomnilniški mediji

Moorov zakon za diske  
SSD na vsakem koraku



## Pomnilnik

Večji  
Hitrejši



## LCD prikazovalniki

Na vsakem koraku  
Večji, cenejši, višja  
ločljivost, format 16:9  
Dotik kot način interakcije



# Work is no longer a location



Send their last email of the day after leaving the office

Information workers use three or more devices for work

Employees are accessing sensitive data from personal devices



One product family

One platform

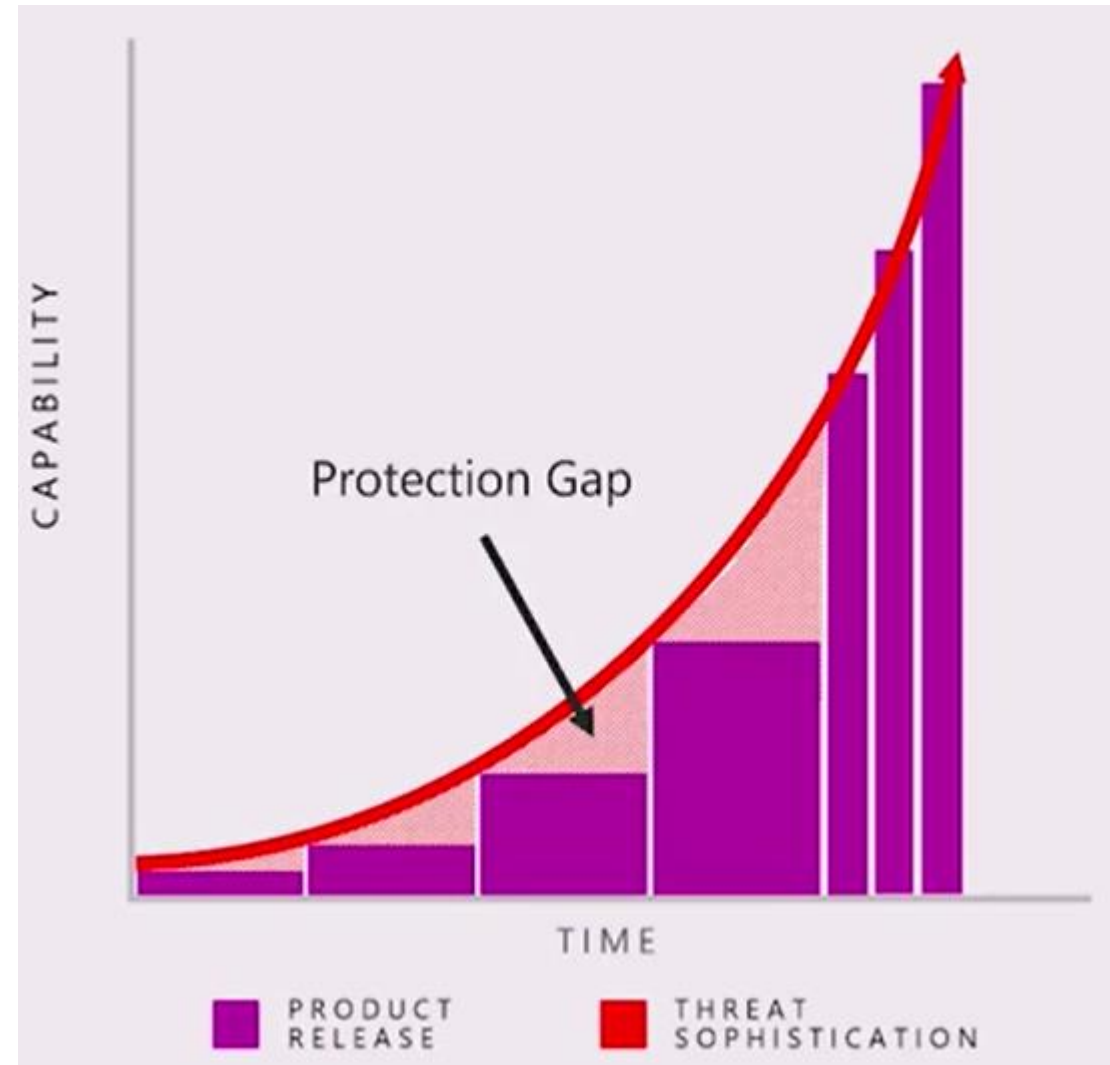
One store

# Quick quiz!

- When was Windows 10 launched?
  - Which version was used for that Windows 10 build?
  - Until when is that Windows 10 version supported?
- Since then, how many feature updates were released?
  - When was last Windows 10 feature update (version) released?

# Windows as a Service

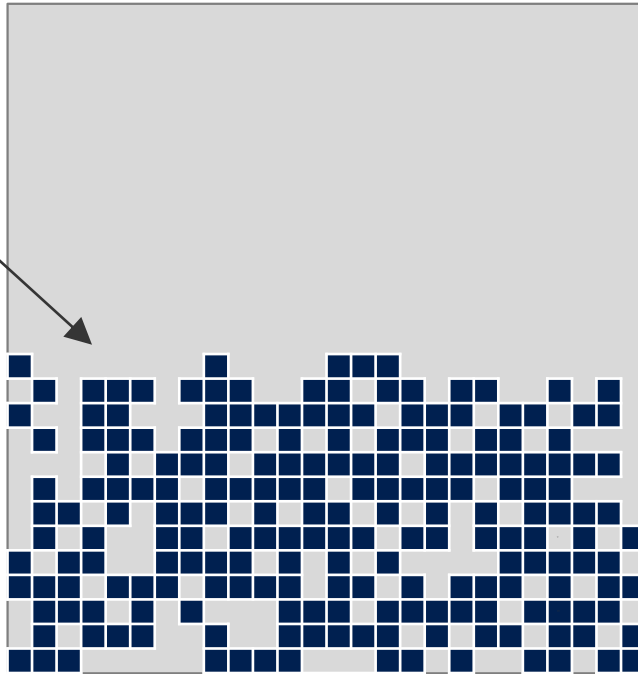
- Traditional deployment
  - New release every 3-5 years
  - Attackers take advantage of periods between releases
  - Long gaps between new features
- Windows as a Service
  - New Windows release twice per year
  - Continual Windows 10 improvements
  - Incremental update each month



# Windows as a Service: Servicing Windows

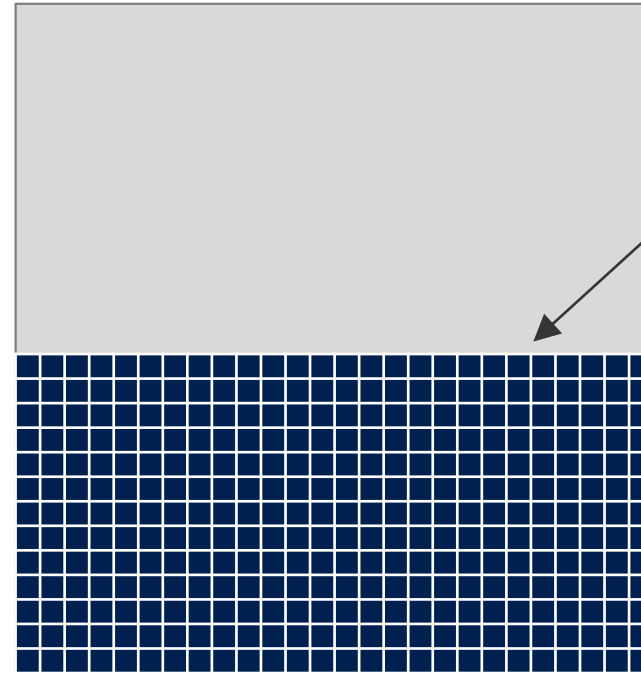
With Windows 7 and 8, servicing choices added complexity and cost, increased fragmentation, and reduced quality

What users  
are running



**Typical Windows 7 PC:  
Selectively Patched**

What  
Microsoft  
is testing



**Windows 7 Test Lab PC:  
Fully Patched**

# Windows as a Service: Servicing Windows

## Quality Updates

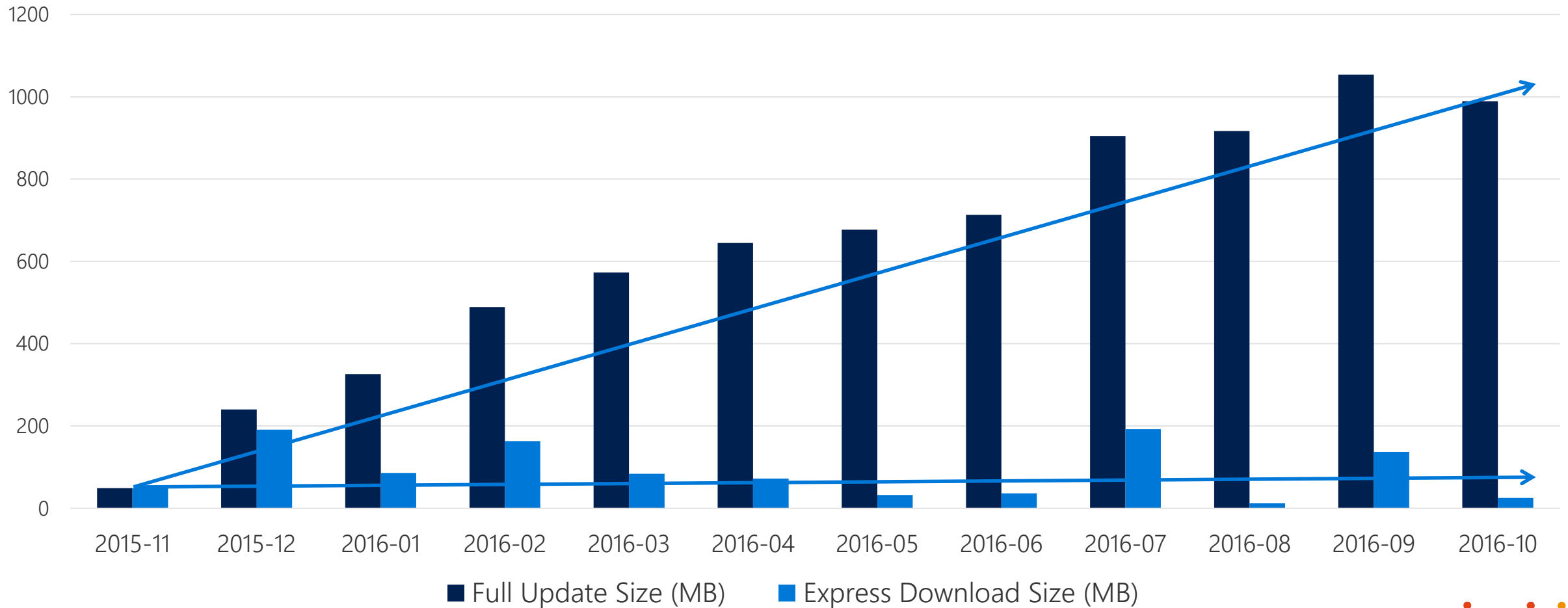
A single **cumulative** update each month  
Security fixes, reliability fixes, bug fixes  
Supersedes the previous month's update  
**No new features**  
Try them out with Security Update  
Validation Program (SUVP)

## Feature Updates

Targeting **twice per year** with new capabilities  
Very reliable, with built-in rollback capabilities  
Simple deployment using in-place upgrade,  
driven by existing tools  
Try them out with Insider Preview

Changes being implemented for older Windows releases as well

# Windows 10 Quality Updates size



# Improving Windows as a Service

## Current Challenges

### Windows 10 releases are **unpredictable**

"Two to three times per year" (with exceptions)

Release timeframes are not disclosed in advance

### Windows 10 **servicing timelines are unclear**

"We service two CBB releases at all times, with a 60-day grace period"

Customers are unable to predict end of servicing dates

### Windows 10 **updates are too large**

Periodic feature updates and monthly quality updates are challenging to deploy due to their size

## Announced Changes

### Windows 10 releases are **predictable**

Twice every year, targeting March and September

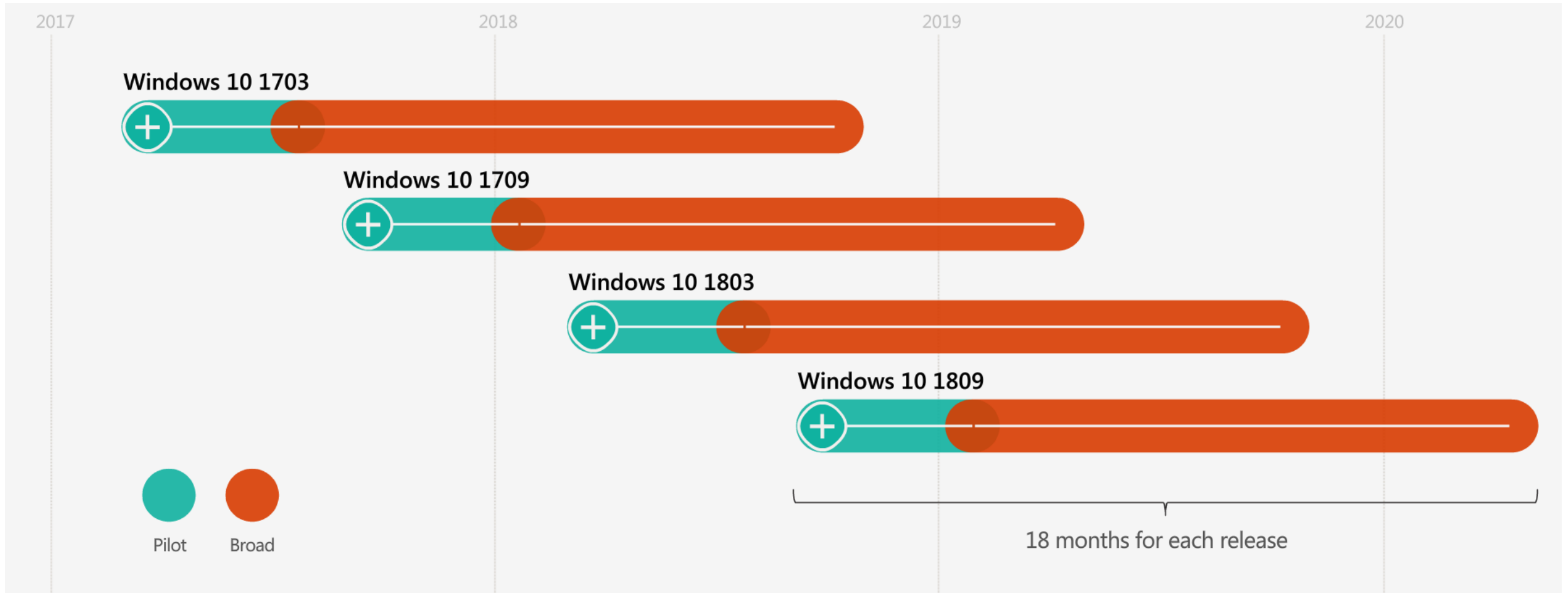
### Windows 10 **servicing timelines are clear**

Each Windows 10 feature release will be serviced and supported for 18 months from the date of release

### Windows 10 **updates are measurably smaller**

Improvements available in Windows 10 1607 and Windows 10 1703, with further improvements coming later this year (as previously announced)

# Predictable update cadence



# Windows 10 editions

Feature	Windows 10 Home	Windows 10 Pro	Windows 10 Enterprise	Windows 10 Education
Max. physical CPU	1	2	2	2
Max. memory (x64)	128 GB	2 TB	2 TB	2 TB
MDM support	✓	✓	✓	✓
Domain Join		✓	✓	✓
Remote Desktop	Client only	✓	✓	✓
Boot from VHD		✓	✓	✓
BitLocker and BitLocker To Go		✓	✓	✓
AppLocker			✓	✓
Hyper-V		x64 only	x64 only	x64 only
Windows To Go			✓	✓
Device Guard			✓	✓

## All editions include:

Start menu and Live Tiles  
Continuum and Tablet mode  
Cortana  
Paint 3D  
Microsoft Edge  
Windows Hello  
Windows Universal Apps

## Windows 10 Enterprise E3 and E5

Subscription based, for anyone  
Automatic activation  
Automatic step-up from Pro

# Comparing commercial desktop edition features

	PRO	ENTERPRISE E3	ENTERPRISE E5
<b>SECURITY AND IDENTITY</b>			
Windows Hello for Business	•	•	•
Windows Information Protection	•	•	•
Credential Guard		•	•
Device Guard		•	•
Windows Defender Advanced Threat Protection			•
<b>MANAGEMENT AND DEPLOYMENT</b>			
Domain Join and Azure AD Join	•	•	•
MDM Enablement	•	•	•
Windows Store for Business, Private Catalog	•	•	•
Managed User Experience		•	•
AppLocker		•	•
Microsoft Application Virtualization (App-V)		•	•
Microsoft User Environment Virtualization (UE-V)		•	•
Cortana Management		•	•
Windows Store Management		•	•
Advanced Telemetry Controls		•	•

# Microsoft Application Virtualization (App-V)

- App-V client included in Windows 10
  - Virtual applications work like installed applications
  - Virtual applications use Windows standards
  - App-V server infrastructure still required (App-V server and sequencer)
- Flexible Virtualization
  - Multiple App-V applications can share the same virtual environment
  - Virtual applications available dynamically, without installation
  - Designed to support highly integrated applications
- Powerful Management
  - Web-based management interface
  - PowerShell scripting allows automation and customization



# User Experience Virtualization (UE-V)

Synchronizes settings

Control over what is synchronized

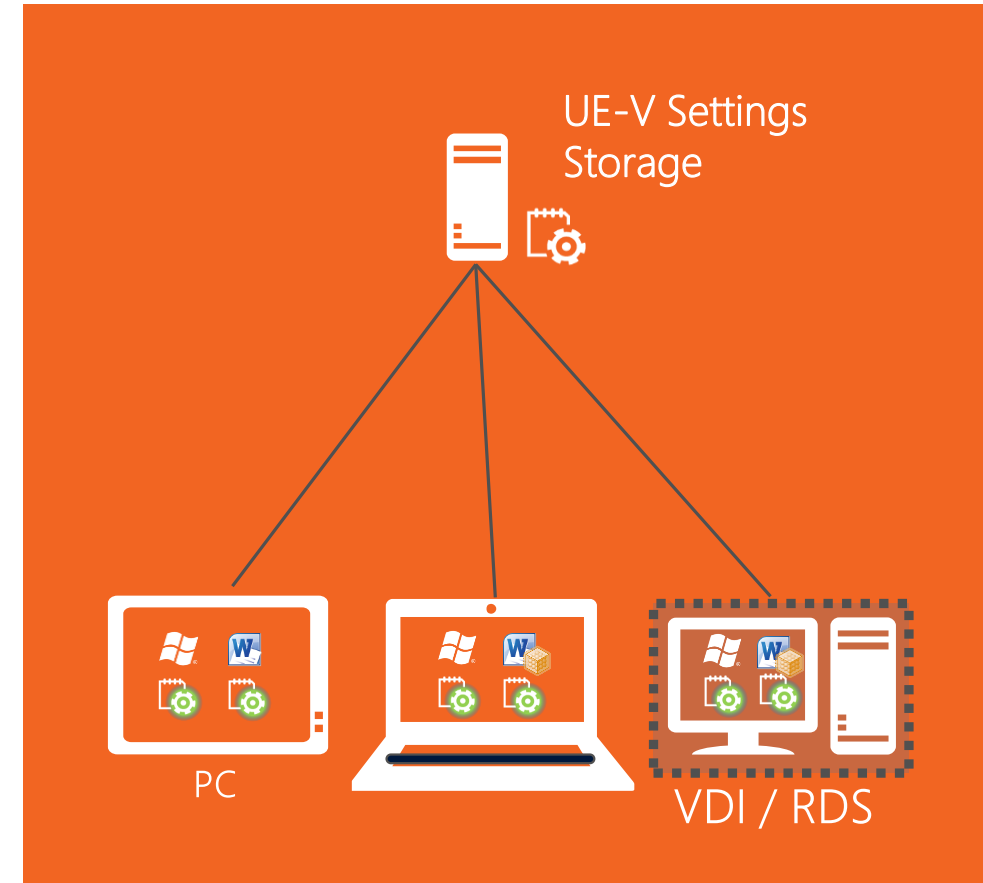
- UE-V settings location templates
- Windows 10 must be domain member

Over different desktops

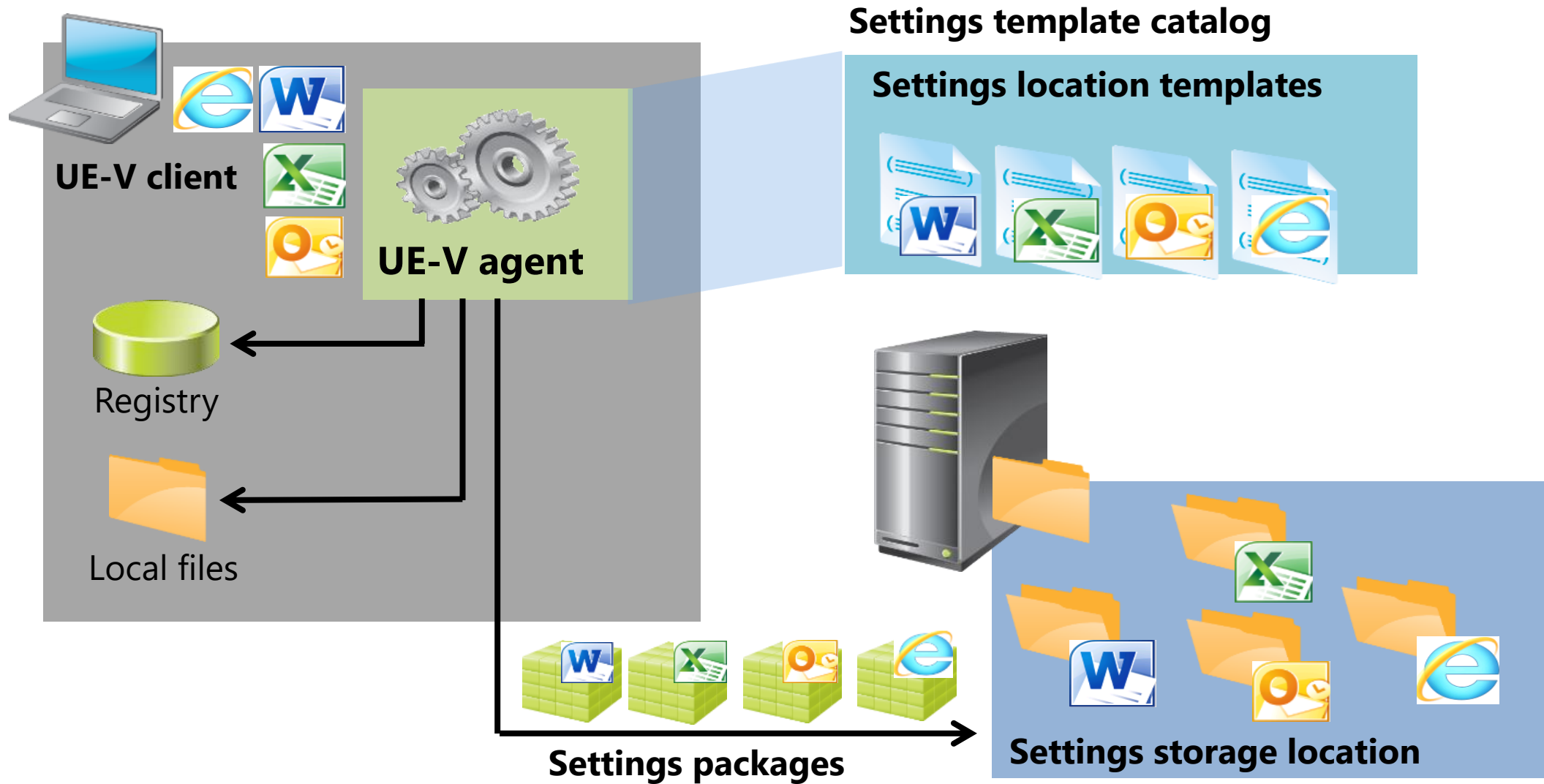
- Physical devices (PCs, desktops, laptops)
- Virtual desktops (RDS/VDI)

Over different application types

- Locally installed applications
- Virtualized applications (App-V)
- Windows Store applications



# User Experience Virtualization (UE-V)

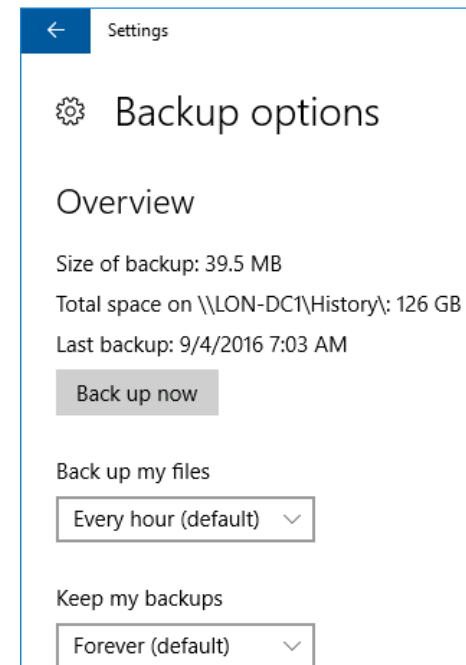
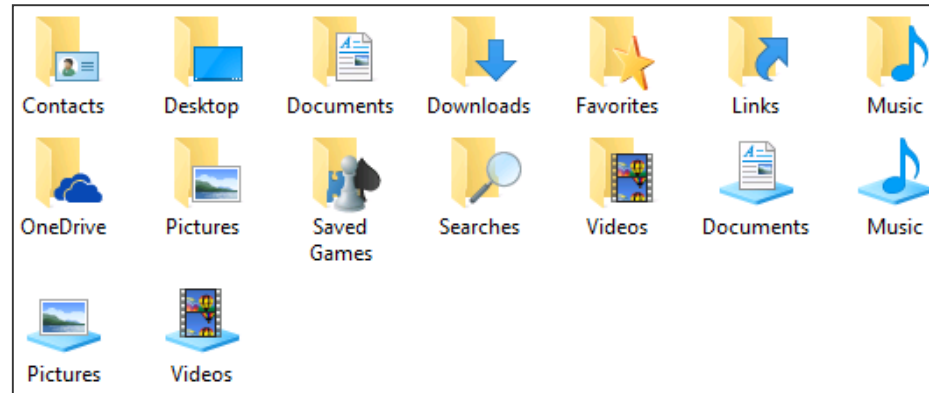
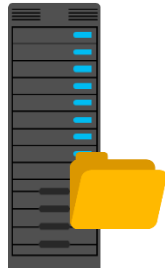


# File History in Windows 10

- File History saves backup copies of user files
- Configure File History by using Control Panel or Settings app
- File History protects profile folders and libraries, by default
- You can protect additional folders by:
  - Adding them to protected libraries
  - Using the Backup options in the Settings app
- Save copies on local drive, removable drive or network location
- File History copies protected files hourly and stores indefinitely
- You can preview and restore backup copies, and restore to original or alternate location

# How File History works?

10:00  
Restore 8:00



# Work Folders



- Allow users to access their individual data
- Data is stored centrally on traditional file servers
  - File servers must be Windows Server 2012 R2 or Windows Server 2016
- Users can use multiple and various devices for access
  - Regardless of whether devices are domain-joined or not
  - Devices can run Windows 10, Windows 8.1, Android or iOS
- Allow access from any location with the connectivity
  - Local copy is available without network connectivity
- Ensure compliance with company policy
  - Access control, quotas, file screening, classification, and more
  - Local data copy can be encrypted and wiped remotely

# Windows 10 identity choices

## Organization Owned

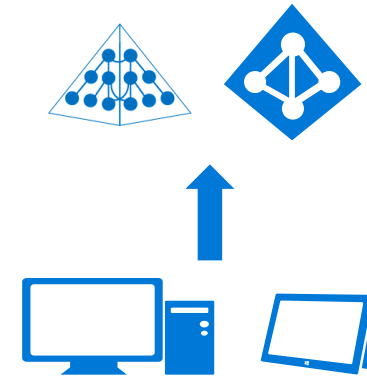


- Computer joins AD to establish trust
- User signs on using AD account
- Group Policy + System Center



- Computer joins Azure AD to establish trust
- User signs on using Azure AD account
- Intune/MDM
- Settings roaming

## Personally Owned (BYOD)



- Computer registers with AD or Azure AD via **Device Registration** to establish trust for remote resource access
- User signs in with a Microsoft account, associates an Azure AD account
- Intune/MDM



Single sign-on to enterprise + cloud-based services

# Windows as a service drives infrastructure updates

Windows 10 can be joined to existing AD DS

Infrastructure services should be updated for managing Windows 10

Updates or newer versions needed for full support of Windows 10 features

## Configuration Manager

ConfigMgr current branch 1702 recommended

## Windows Server Update Services

WSUS 4.0 (Windows Server 2012 or higher) recommended, with KB 3159706

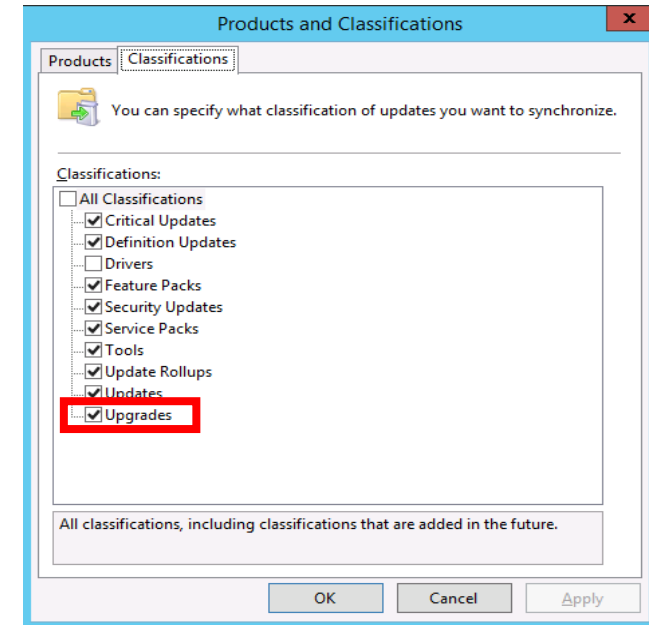
WSUS 3.0 SP2 good enough for monthly patches

## Key Management Service (KMS)

Requires Windows 10 keys, hotfix 3058168 (from 2015)

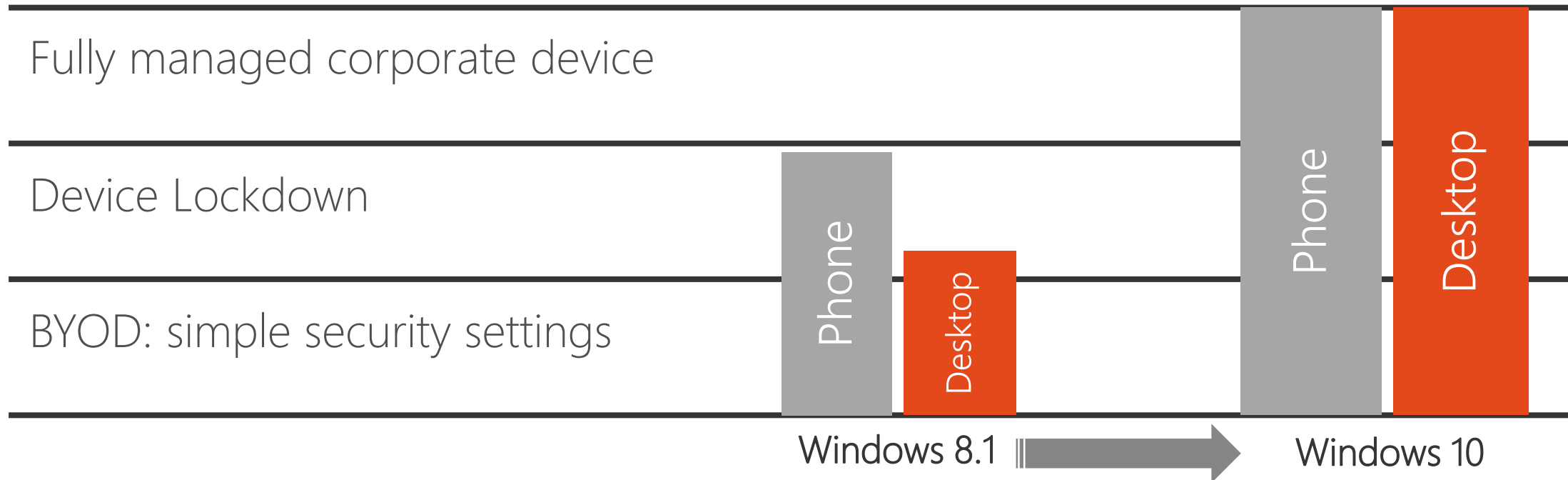
## Microsoft Deployment Toolkit

MDT 2013 Update 2 recommended, build 8443 is available since November 2016

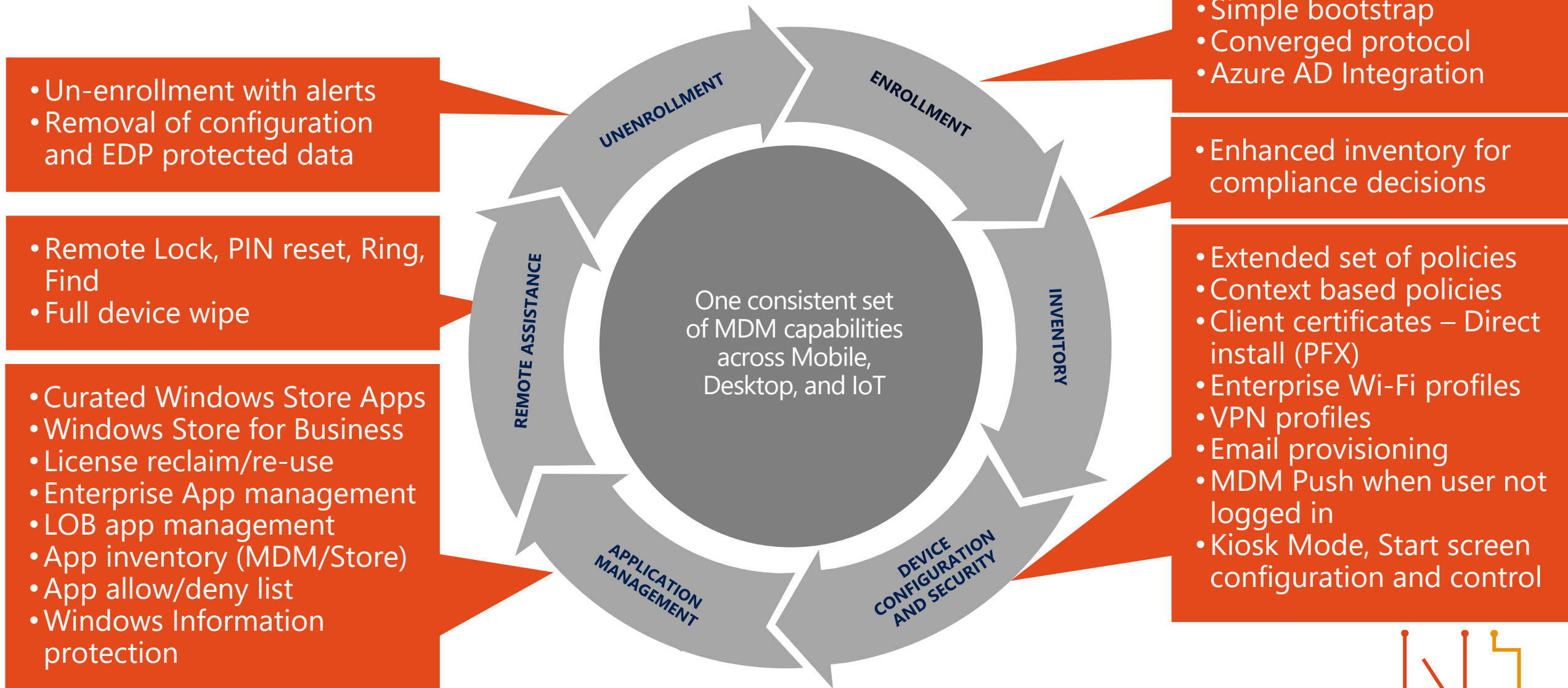


# Mobile Device Management in Windows 10

Significant investments in added functionality for both mobile and desktop devices



# MDM in Windows 10



# New MDM Configuration Service Providers

- Windows 10, version 1703 adds many new CSPs:
  - Policy
  - DynamicManagement
  - CleanPC
  - BitLocker
  - NetworkProxy
  - Office
  - EnterpriseAppVManagement
- MDM Migration Analysis Tool
  - Determine which GP settings are available as MDM policies

# Group Policy

New policies to support Windows 10 features:

- Start menu management
- Microsoft Edge settings
- Windows Hello settings
- App-V and UE-V settings
- Windows app management
- Windows Update deferral

No major changes in engine  
No major changes in GPMC

Capabilities from Windows 8.1:

- Policy caching
- IPv6 support for printers, VPN, targeting

Capabilities from Windows 8:

- Sign-in optimization for DirectAccess
- Better use of larger registry policies
- Remote group policy refresh (GPUpdate)
- More efficient background processing

GP processing has not changed

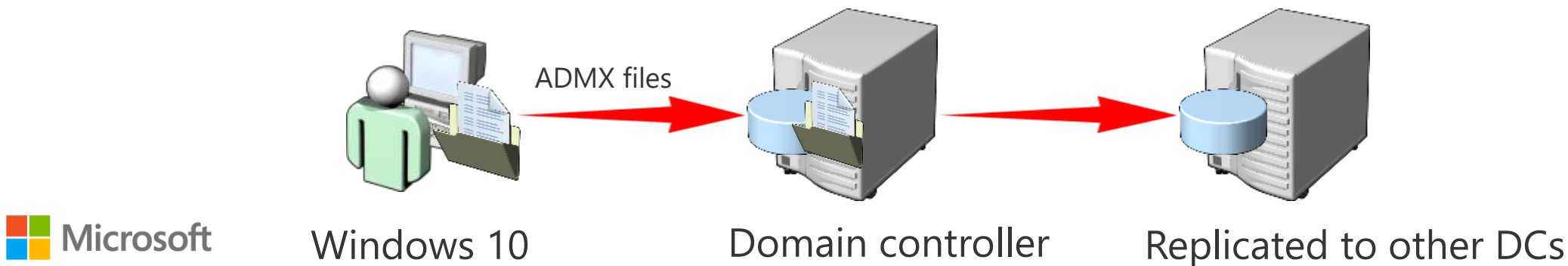
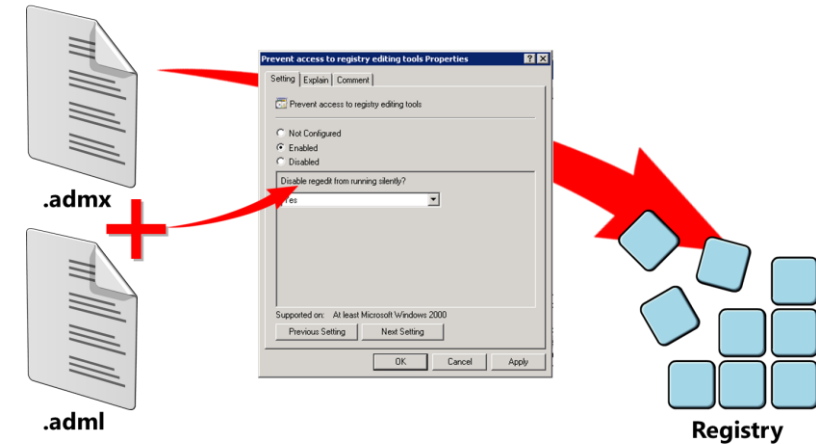
# Group Policy administrative templates

Administrative Templates determine what settings appear and how they are grouped in GPO Editor

## The central store

- Central repository for ADMX and ADML files
- Stored in SYSVOL and must be created manually
- Detected automatically

Copy new templates to central store



# Windows Analytics

A cloud based, telemetry driven suite of services

Providing actionable information

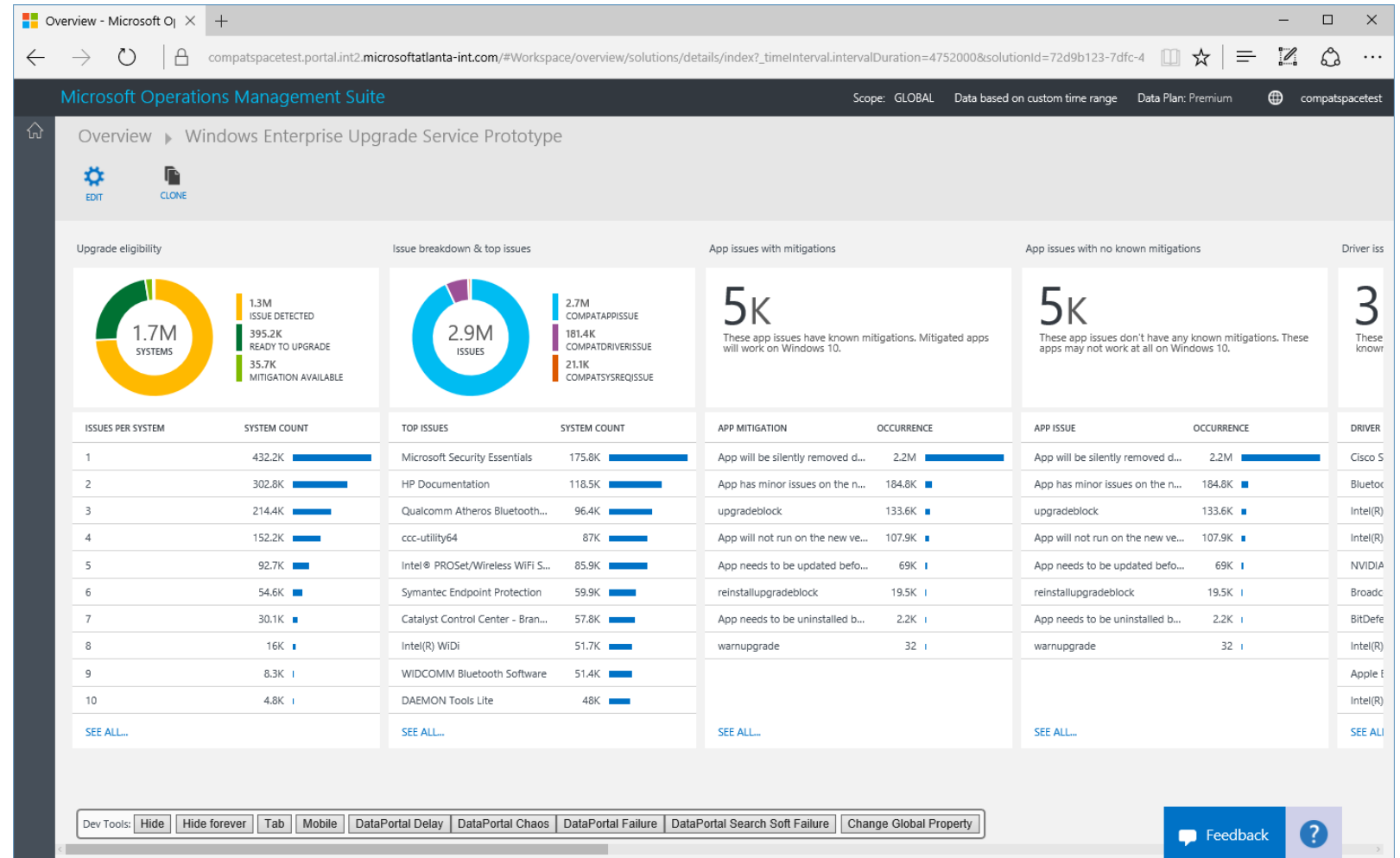
Built on Microsoft Operations Management Suite Log Analytics

Upgrade readiness

Leverage telemetry to see what's happening in your organization

Update Compliance

Ensure that Windows devices are up to date with the latest updates



# Traditional and modern deployment

From Windows 7, 8, 8.1

New Devices

Windows 10:  
Stay Current

In-Place  
Upgrade

Traditional  
Deployment

Provisioning

Traditional  
Deployment

In-Place  
Upgrade

# When not to move in-place?

Changing from Windows x86 to x64

~~Changing from legacy BIOS to UEFI~~

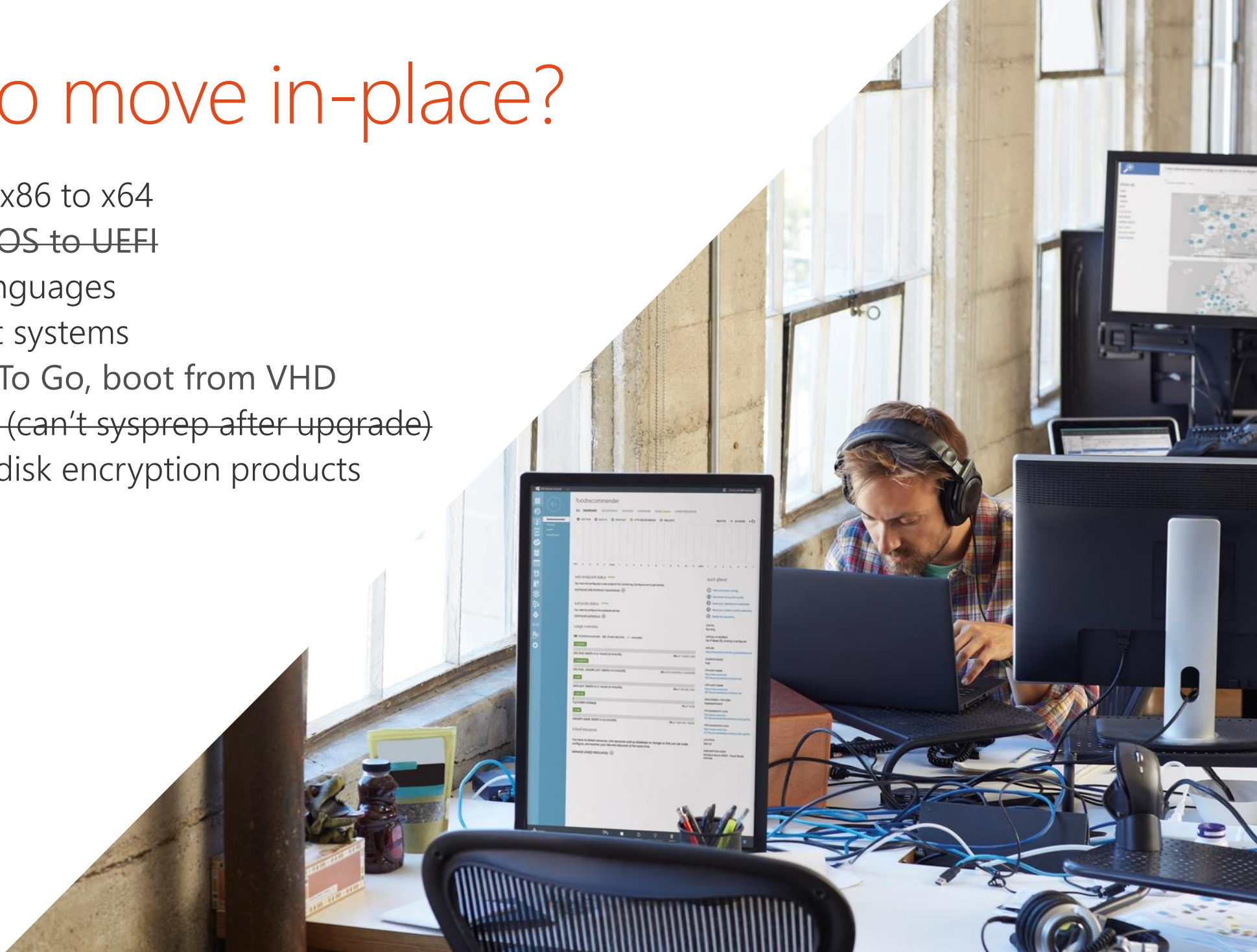
Changing between OS languages

Dual boot and multi-boot systems

Systems using Windows To Go, boot from VHD

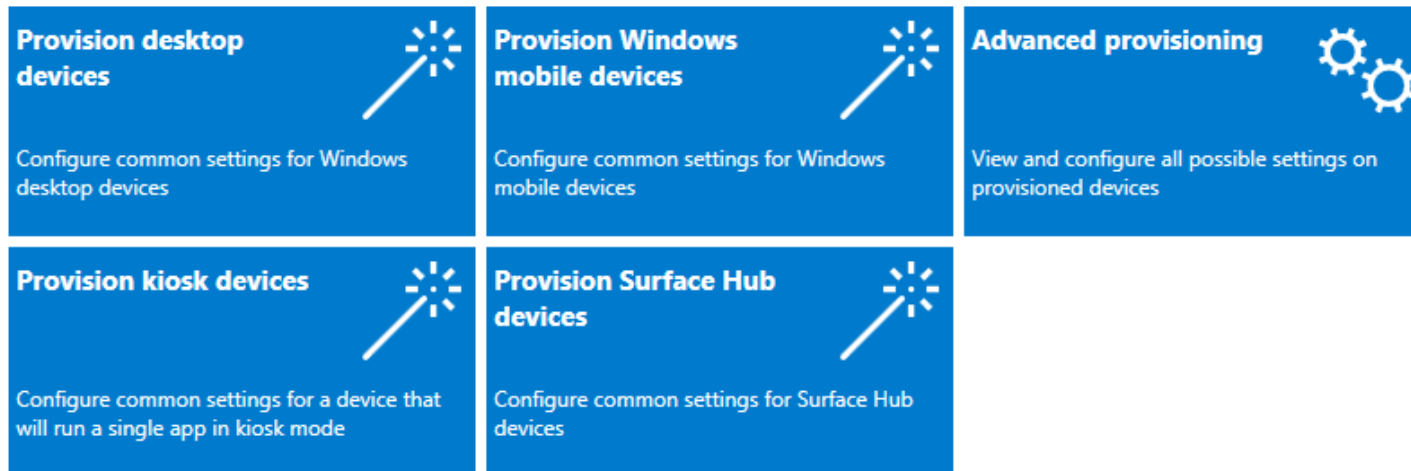
~~Image creation processes (can't sysprep after upgrade)~~

Using certain third-party disk encryption products



# Windows 10 provisioning

- Windows Configuration Designer is tool for transforming Windows 10
  - Provision Windows 10 to comply with company policy
  - Provisioning is targeted for various Windows 10 editions
- Windows Configuration Designer is used to
  - Create provisioning packages to apply settings to Windows 10



# What can be provisioned?

Initial Setup

Edition Upgrade

Certificates

Connectivity Profiles

Management  
Enrollment

Universal Windows  
Apps

Win32 Applications  
Scripts

Enterprise Policies

Offline content

Browser Settings

Start Menu  
Customization

Assigned Access

# Windows 10 security features

Virtualization Based Security	Device Guard		Device Encryption	
UEFI Secure Boot	Microsoft Edge		Windows Information Protection	
Windows Trusted Boot	Windows Defender	Credential Guard	BitLocker Admin and Monitoring	Security Management <sup>2</sup>
Windows Update	Windows Firewall	Windows Hello Companion Devices	BitLocker	Conditional Access
Trusted Platform Module	SmartScreen	Windows Hello	BitLocker to Go	Windows Defender Advanced Threat Protection



Secure your identities



Protect enterprise data



Enhance threat resistance



Secure your devices and connections



Detect, investigate,  
and respond to  
breaches

PRE-BREACH

POST-BREACH

# Summary

- Windows 10 is last client Windows OS (Windows as a Service)
  - Periodically updated twice per year (feature update)
  - Aligned with Office 365 ProPlus and Configuration Manager
- Creator Update (build 1703) is current Windows 10 version
  - Include many improvements and new features
- Learn about Azure AD and MDM!
- In-place upgrade and Provisioning are modern deployment
- Windows 10 is the most secure Windows ever!

# Additional Information

## What's new in Windows 10, version 1703 IT pro content

<https://docs.microsoft.com/en-us/windows/whats-new/whats-new-windows-10-version-1703>

<http://aka.ms/w10-1703-resources>

## What's new in the Windows 10 Creators Update

<https://blogs.windows.com/windowsexperience/2017/04/11/whats-new-in-the-windows-10-creators-update>

## Quick guide to Windows as a service

<https://docs.microsoft.com/en-us/windows/deployment/update/waas-quick-start>

## Windows 10 Virtual Labs

<https://aka.ms/w10virtuallabs>

## Manage corporate devices

<https://docs.microsoft.com/en-us/windows/client-management/manage-corporate-devices>



The best Windows ever. Forever.