




MIGRATE TO EXCHANGE ONLINE - *TIPS 'N' TRICKS*

VLADIMIR STEFANOVIC

#ntk19

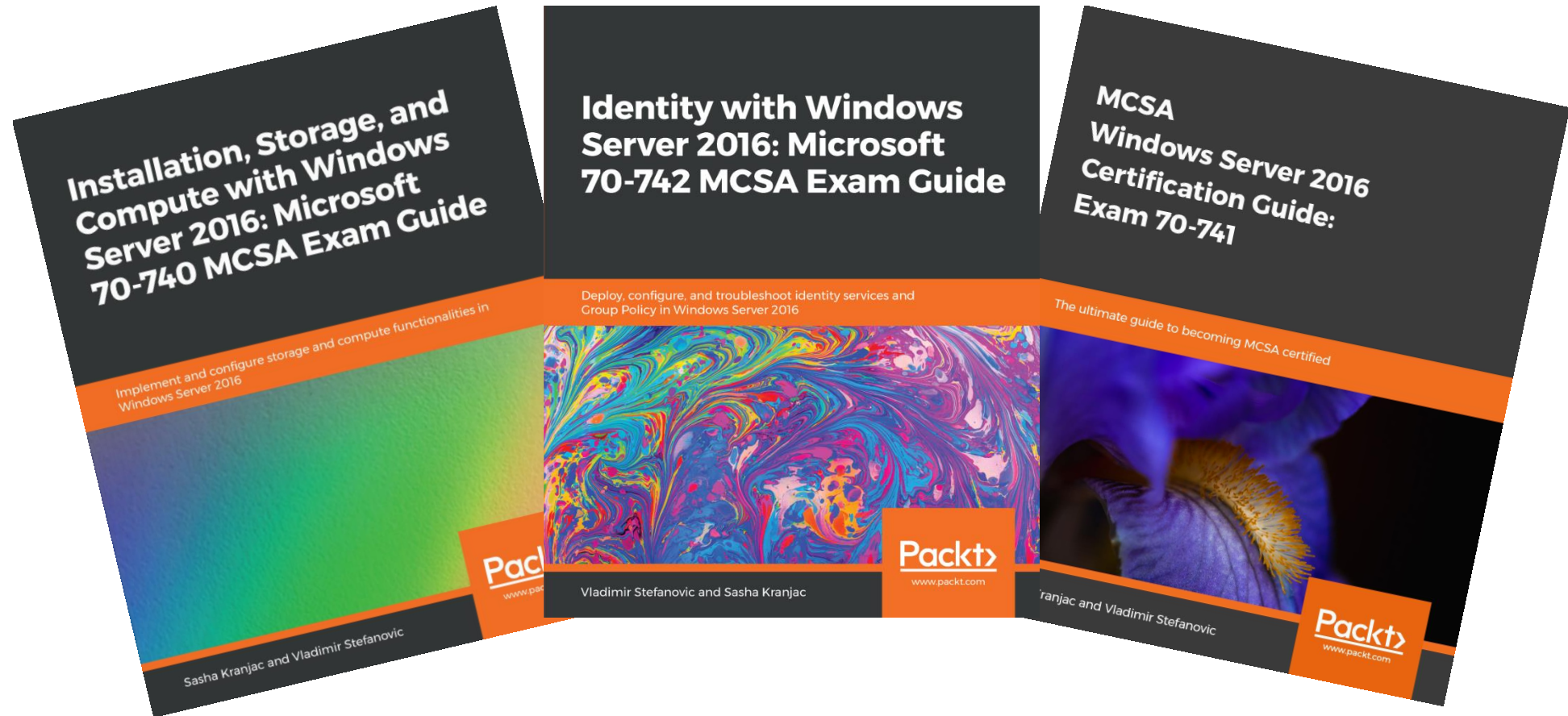


WHO AM I

- Vladimir Stefanović
- Lead System Engineer @  **SUPER**ADMINS
- 10+ years of experience
- MCT, MCSE, Office365, Azure Architect, and more certificates
- Book author, conference speaker, technical trainer and Azure UG Leader
- www.tech-trainer.info
- @wladinho31



MY BOOKS – MCSA 2016 EXAM GUIDE



AGENDA

- Migration types
 - Most common issues
 - Tips for Exchange to Exchange Online migration
-

BUSINESS CRITICAL SERVICES MIGRATION

Angry User



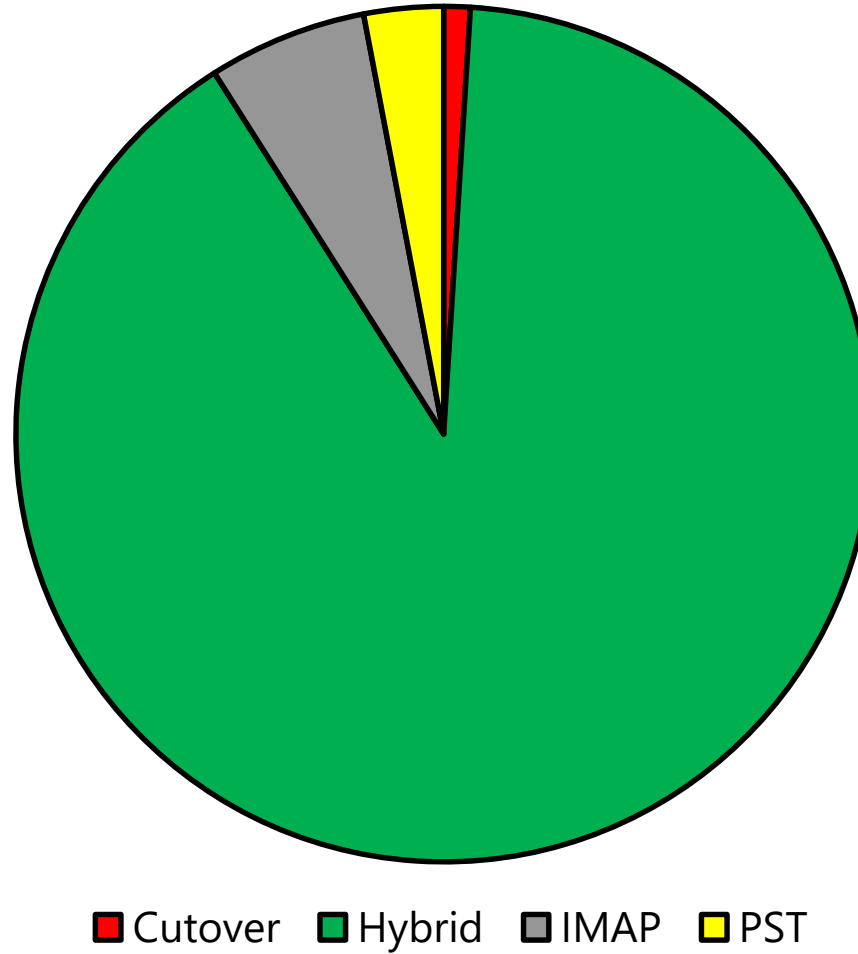
Happy User



MIGRATION TYPES

- Staged Migration - „Old“ Exchange Servers (2003, 2007)
 - Cutover Migration - All Exchange Servers
 - Hybrid Migration - Exchange 2010 and newer
 - IMAP Migration - All known IMAP-Enabled mail systems
 - PST Migration - Last resort migration
-

MY EXPERIENCE



CUTOVER MIGRATION

- Move entire email organization to Office 365 in one batch
 - Maximum: 2,000 mailboxes, Recommended: 150-200 mailboxes
 - The primary on-prem domain name must be an accepted as a domain owned in Office 365
 - Users must re-configure email clients
 - Potential delay in email routing - No email routing between on-prem Exchange and Office 365
-

IMAP MIGRATION

- Migrate ONLY user inbox or other mail folders.
 - Doesn't migrate contacts, calendar items, or tasks.
 - Maximum items: 500,000, biggest email: 35 MB
 - To migrate email, you need access to the user mailboxes in your source email system
 - Administrator need to manually map source and destination mailboxes
 - Users must re-configure email clients
-

PST MIGRATION

- The biggest „downtime“ accessing mails
 - Most complicated to perform, so many manual steps
 - Users must re-configure email clients
 - Bottleneck is PST uploading
-

HYBRID MIGRATION (MINIMAL HYBRID)

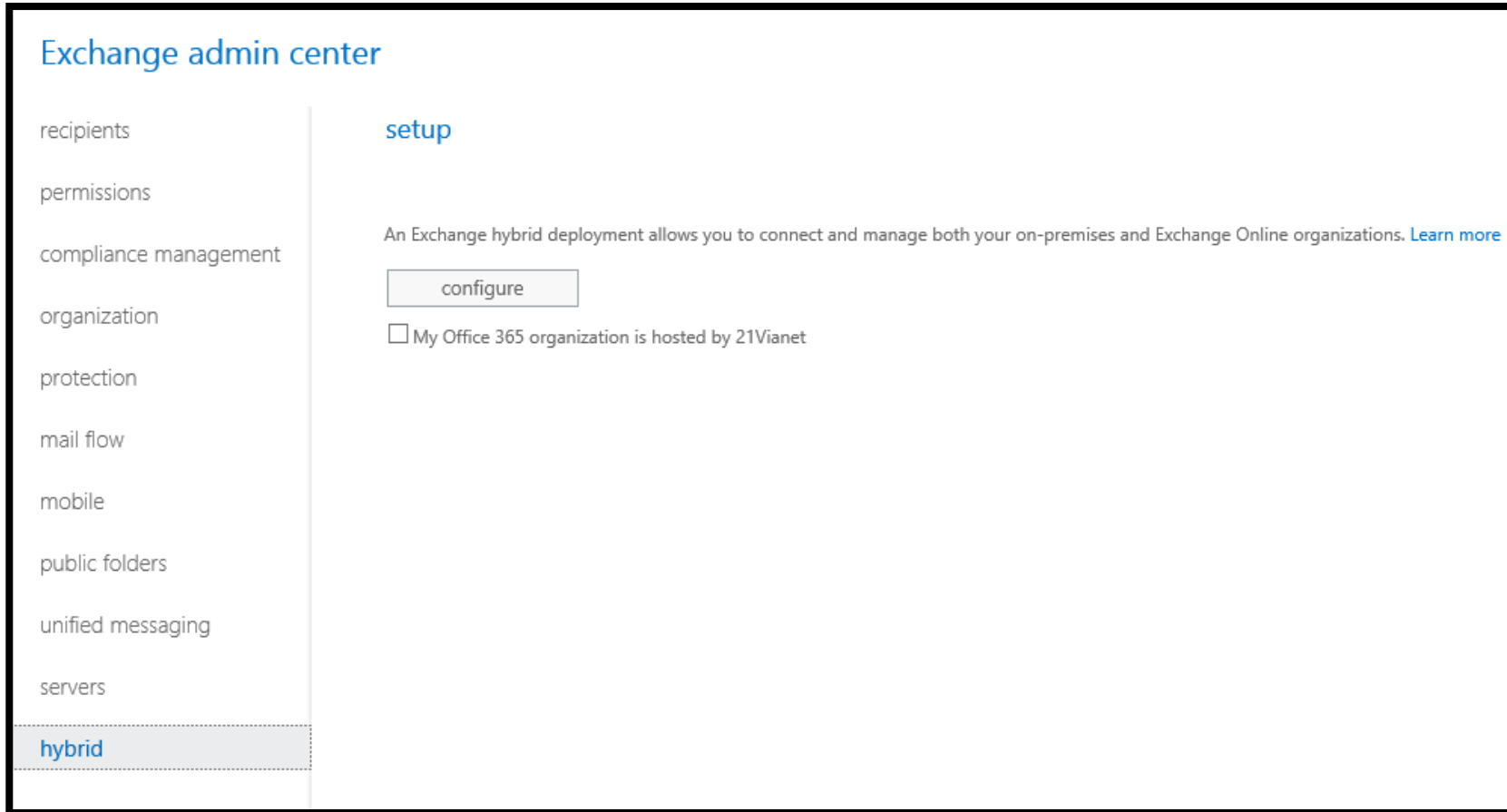
- Exchange 2010, 2013 or 2016 server on-premises
 - Move to Exchange Online over a few weeks or less
 - Do NOT plan to continue to run directory synchronization to manage your users
 - Users DO NOT need to re-configure Outlook
 - AD Connect is required
 - Hybrid Configuration is required
 - No downtime in mail flow after completing migration batches
-

HYBRID MIGRATION (MINIMAL HYBRID)

- Secure cross-premises mail flow not supported by default
 - Cross-premises Free/Busy, e-Discover or Archiving not supported between on-prem mailboxes and Office 365 mailboxes
 - OWA redirection for migrated users not supported
 - Cross-premises GAL is not supported
-

CONFIGURING MINIMAL HYBRID

- Latest cumulative update is required for hybrid configuration



CONFIGURING MINIMAL HYBRID

information

You must log in to Office 365 before you can run the Hybrid Configuration wizard. Please try again after you log in to Office 365.

 [sign in to Office 365](#)

Cancel

Application Install - Security Warning

Do you want to install this application?



Name:

Microsoft Office 365 Hybrid Configuration Wizard

From (Hover over the string below to see the full domain):

mshrcstorageprod.blob.core.windows.net

Publisher:

[Microsoft Corporation](#)

Install

Don't Install



While applications from the Internet can be useful, they can potentially harm your computer. If you do not trust the source, do not install this software. [More Information...](#)

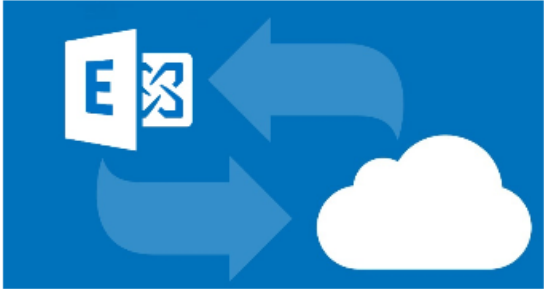
CONFIGURING MINIMAL HYBRID

Office 365

Office 365 Hybrid Configuration

Office 365 Worldwide
EXC-01
16.0.2514.0

Hybrid Configuration Wizard



Running this wizard will configure coexistence between your on-premises environment and Exchange online.

[What does this application do?](#)

back

next

cancel

Office 365

Office 365 Hybrid Configuration

Office 365 Worldwide
EXC-01.tech-trainer.info
Exchange Server 2016 15.1.1531.3 CU10
16.0.2514.0

On-premises Exchange Server Organization

☒ Detect the optimal Exchange server

EXC-01

Domain

tech-trainer.info

Version

Version 15.1 (Build 1531.3) CU10 Standard Edition

Roles

Mailbox

Site

tech-trainer.info/Configuration/Sites/Default-First-Site-Name

Product ID

02064-004-0615002-02242

EXC-01.tech-trainer.info

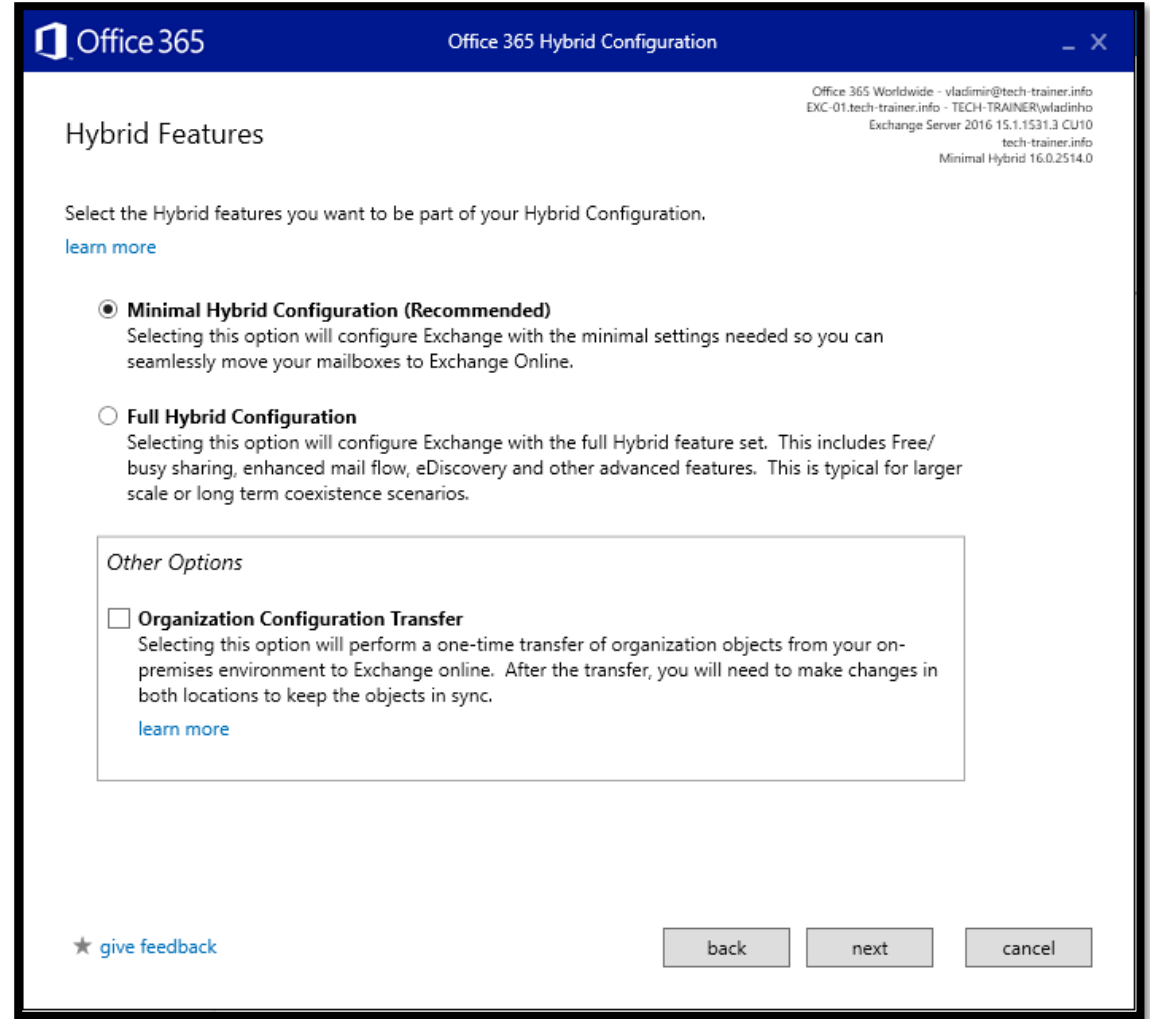
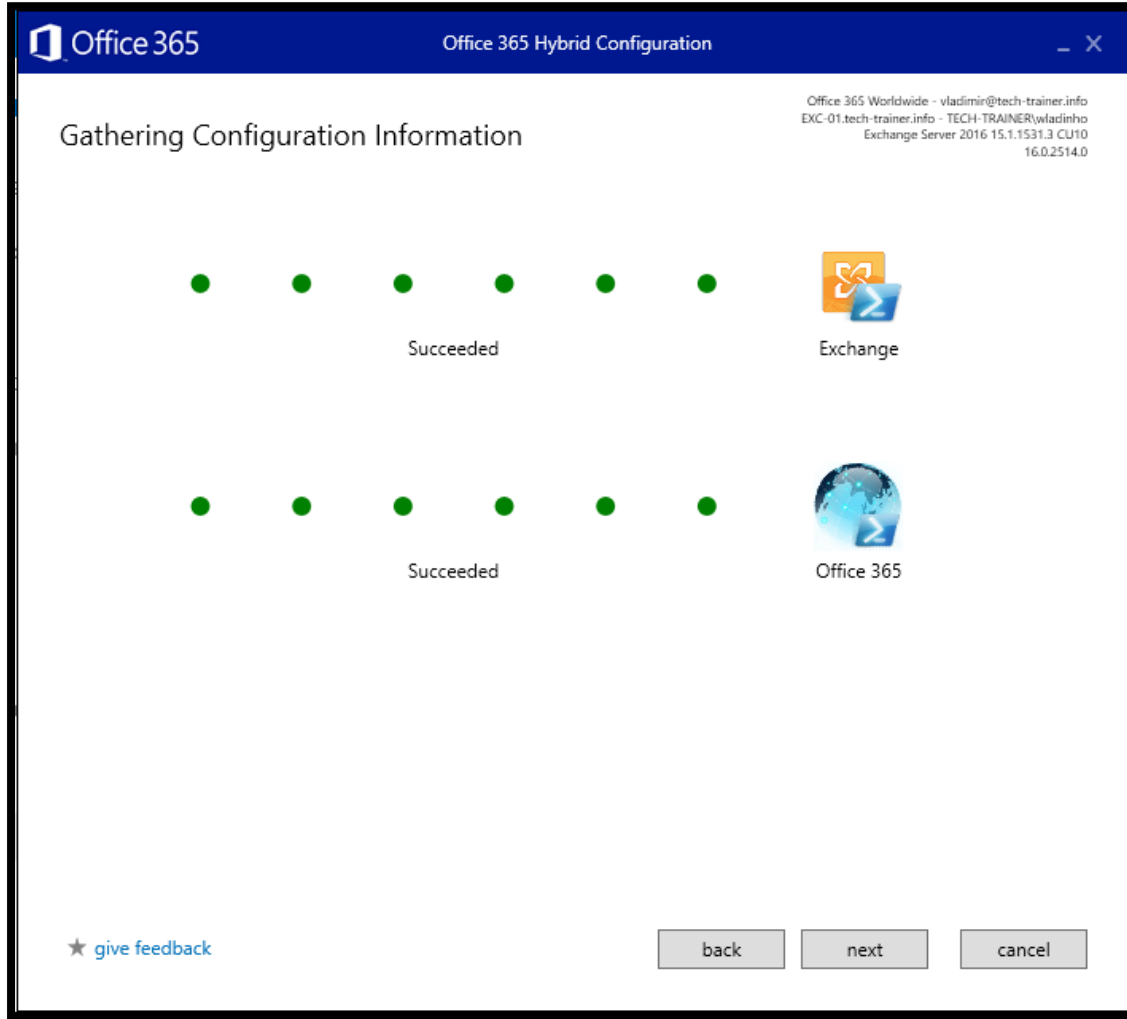
Office 365 Worldwide

back

next

cancel

CONFIGURING MINIMAL HYBRID



MINIMAL HYBRID - MOST COMMON ISSUES

- Office 365 default domain name and on-prem UPN are not same
 - Missing proxy attribute **@tenantname.mail.onmicrosoft.com**
 - Email address with domain name which do not exist in Office 365
 - GUID > ImmutableID relationship
-

MINIMAL HYBRID - MOST COMMON ISSUES

EXC-01

Domain tech-trainer.info
Version Version 15.1 (Build 1531.3) CU10 *StandardEvaluation Edition*
Roles Mailbox
Site tech-trainer.info/Configuration/Sites/Default-First-Site-Name
Product ID **Unlicensed Product**

[license this server now](#)

Status: Failed

[Skipped item details](#)

Data migrated:

Migration rate:

Error: MigrationPermanentException: You can't use the domain because it's not an accepted domain for your organization. --> You can't use the domain because it's not an accepted domain for your organization.

Report: [Download the report for this user](#)

Status: Failed

[Skipped item details](#)

Data migrated:

Migration rate:

Error: MigrationPermanentException: The target mailbox doesn't have an SMTP proxy matching 'wladinho.mail.onmicrosoft.com'. --> The target mailbox doesn't have an SMTP proxy matching 'wladinho.mail.onmicrosoft.com'.

Report: [Download the report for this user](#)

RECAP

- Migration types
 - Most common issues
 - Tips for Exchange to Exchange Online migration
-



OR YOU NEED A BREAK FROM ME 😊
